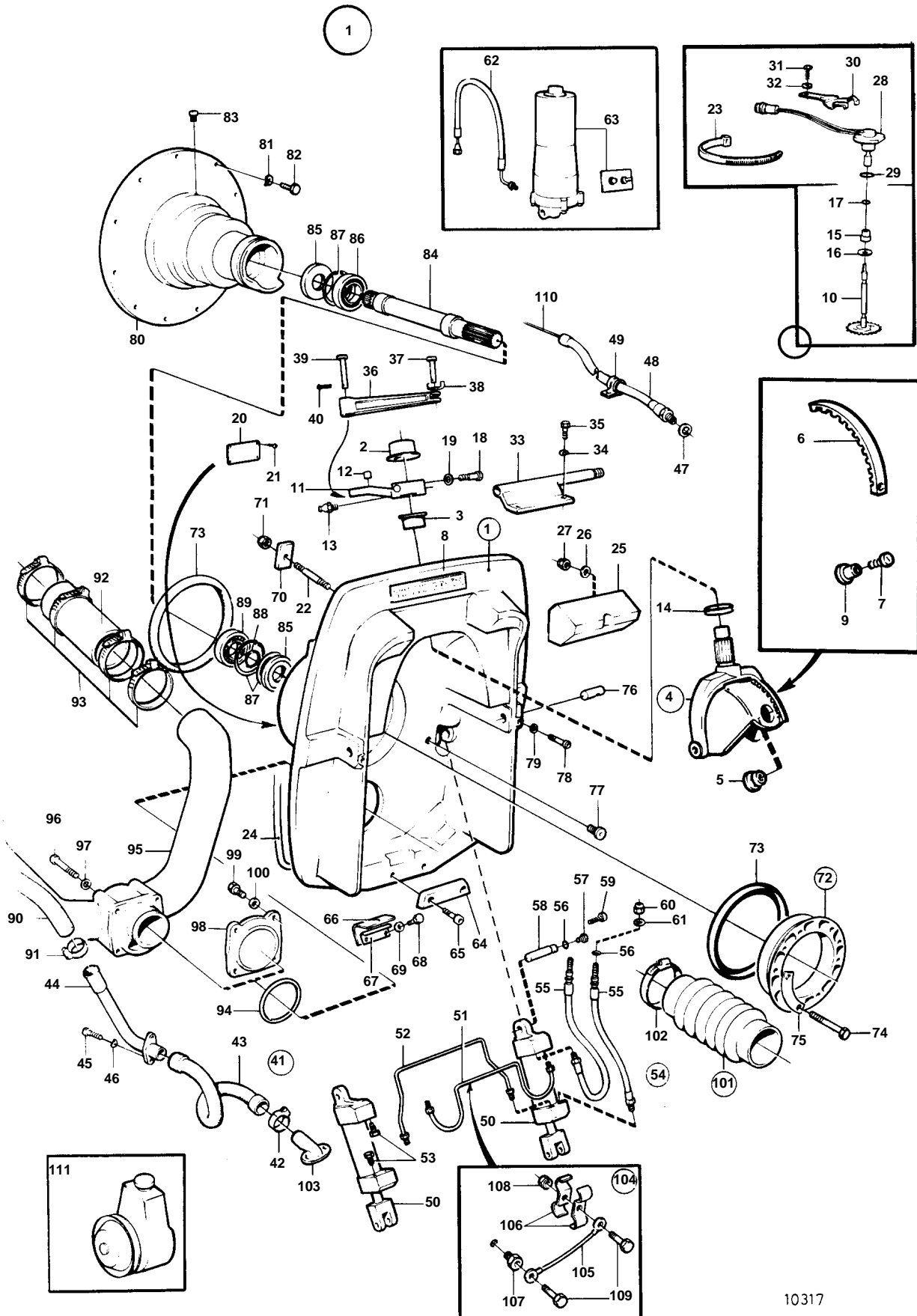


500A,501A



10317

500A,501A

REF	PART NO.	QTY	DESCRIPTION	SEE SEC.	NOTES
1	876150	1	Transom shield		
2	853864	1	· Bushing		
3	853863	1	· Bushing		
4	854066	1	· Steering fork kit		(852950)
5	853048	1	· · Bushing		
6	854063	1	· Gear segment		
7	853759	1	· Screw		
8	852827	1	· Sign		
9	853760	1	· Rivet nut		
10	852984	1	· Drive gear		
11	853017	1	· Spindle arm		SN 1101592794-
12	949368	1	· · Bushing		
13	914169	1	· Lubricating nipple		
14	839195	1	· Ring		
			· Bulletin 48-23	48-23-EN	Seal Ring
15	851430	1	· Bushing		
16	966207	1	· Sealing ring		
17	925050	1	· O-ring		
18	959241	1	· Screw		
19	942336	1	· Spring washer		
20	853706	1	· Type plate		
21	804269	2	· Drive screw		
22	853982	6	· Stud		SN-1101591651
	853595	6	· Stud		SN 1101591652-. NOTE
23	949668	1	Strip clamp		
24	852868	1	Sealing strip		
25	854133	1	Rubber cushion		
26	960148	2	Washer		
27	971089	2	Lock nut		(963107)
28	828726	1	Potentiometer		
29	955991	1	O-ring		
30	853039	1	Bracket		
31	940199	1	Screw		
32	941907	1	Spring washer		
33	852775	1	Cable attachment		
34	941908	2	Spring washer		
35	955320	2	Screw		
36	852786	1	Link rod		
37	913158	1	Clevis pin		
38	853160	1	Lock washer		
39	852788	1	Clevis pin		
40	907861	1	Cotter pin		
41	875847	1	Hose kit		
42	853548	1	· Hose clamp		
43	854555	1	· Hose		REPL BY 875847
44	852771	1	Tube		
45	940100	2	Screw		
46	941906	2	Spring washer		
47	897745	1	Gasket		
48	839091	1	Hose		
49	952635	1	Clamp		
50	853439	2	Hydraulic cylinder		REPL BY 854610
	854610	2	Hydraulic cylinder		
51	852830	1	Tube		
52	852832	1	Tube		
53	852879	2	Plug		
54	854752	1	Hydraulic hose		SN 1101592794-
55	854710	1	· Hydraulic hose		FRONT
	854711	1	· Hydraulic hose		REAR
56	925053	4	· O-ring	IK	
57	852879	2	Plug		
58	852748	2	Pin		
59	853060	2	Flange screw		

500A,501A

REF	PART NO.	QTY	DESCRIPTION	SEE SEC.	NOTES
60	853100	2	Nut		
61	853059	2	Washer		
62	852839	2	Hose	04A-0500	
63		1	HYDRAULIC PUMP AND TRIM INSTRUMENT WITH INSTALLATION COMPONENTS	04A-0500	
64	852835	1	Zinc electrode		
65	946541	2	Screw		
66	852877	1	Check valve		
67	852878	1	Attaching plate		
68	963545	2	Screw		
69	941670	2	Washer		
70	852866	6	Washer		
71	963108	6	Nut		
72	854315	1	Clamping ring kit		(806310)
73	804190	2	· Rubber ring		
74	191844	6	· Screw		
75	806624	3	· Striker plate		
76	853175	2	Pivot pin		
77	853215	2	Plug		
78	963699	2	Screw		
79	941670	2	Washer		
80	841967	1	Flywheel housing		SEE GROUP 2A
81		11	RESILIENT WASHER		SEE GROUP 2A
82		11	SCREW		SEE GROUP 2A
83	914167	1	Lubricating nipple		
84	853809	1	Shaft		SN 1101574204-
85	958860	2	Sealing ring	IK	
86	11013	1	Ball bearing		
87	914533	3	Snap ring		
88	914462	1	Lock ring		
89	181105	1	Ball bearing		
90	855373	1	Hose		
91	961669	4	Hose clamp		
92	834751	2	Hose		SEE GROUP 2B. FOR ENGINE WITHOUT SILENCER.
93	853012	8	Hose clamp		SEE GROUP 2B. FOR ENGINE WITHOUT SILENCER.
94	925260	1	O-ring	IK	
95	852846	1	Exhaust grommet		FOR ENGINE WITHOUT SILENCER.
96	970958	4	Screw		(955328). FOR ENGINE WITHOUT SILENCER.
97	960148	4	Washer		FOR ENGINE WITHOUT SILENCER.
98	854584	1	Flange		FOR ENGINE WITH SILENCER.
99	970945	4	Screw		FOR ENGINE WITH SILENCER.
100	941908	4	Spring washer		FOR ENGINE WITH SILENCER.
101	875848	1	Bellows kit		FOR ENGINE WITHOUT SILENCER.
102	961675	2	· Hose clamp		FOR ENGINE WITHOUT SILENCER.
103	854031	1	Hose connection		SEE GROUP 4C
104	854625	1	Ground cable		
105	854627	1	· Ground cable		
106	854628	2	· Clamp		
107	872207	1	· Nipple		
108	944456	1	· Nut		
109	963545	2	· Screw		
110		X	CONTROL CABLE		SEE GROUP 9
111		X	POWER STEERING		SEE GROUP 6